

# SBL-Series Hydraulic Gantry SBL1100

## The 1100 Ton Hydraulic Gantry

With the SBL1100, Enerpac launches a new generation of hydraulic gantry into the market. Mechanical design and control developments ensure optimum operational stability and safety. With a capacity of 1100ton /10000kN and a lifting height reaching over 40'/12.3m, the SBL1100 is one of the most versatile and competitive gantries in its class.

### A closer look at the SBL1100

- The main features of the SBL1000 can be defined as follows:
- Three stage full powered hydraulic cylinders.
  - Octagonal beam design.
  - Tank rollers.
  - Mechanical lift locking system.
  - Foldable beam system.
  - Hydraulic Powerpack is contained in the unit.

The three-stage double acting hydraulic cylinder is an in-house development and fabrication. High grade steel material is used to obtain a lower weight and the latest seal technology is used to eliminate any leakage.

Octagonal beams are made from T1 high strength steel, achieving an optimum balance of weight & strength. Maintenance free bearings are used with minimal clearances.

The tank rollers are a proven design, however, a self propelled hydraulic gantry is a new development. The roller design is compatible to the majority of existing tracks (check the suitability with Enerpac) and due to the large number of contact points, efficiently manages the load distribution, up to 70% lower than conventional designs. And a relief to the operator—wheel spin is history.

Mechanical locking can be applied on demand in any position during the lift to mechanically secure the load.

The foldable modular design of the beam makes the SBL1100 not only easy to transport - 2 units in a 20' container or on one truckload, but also easily positioned into confined spaces. The erection of the beam is controlled by two hydraulic cylinders and the process takes only one minute.

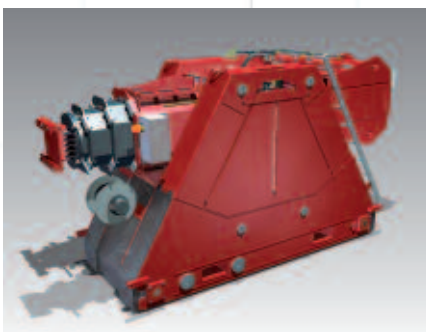
### The Intellilift control system

A standard feature on all Enerpac Hydraulic gantries, Intellilift offers a wireless remote operation and includes automatic synchronisation and overload detection features. The operator can choose his position to have the best overview on the lift.



By designing the hydraulic system within the assembly, no trailing hydraulic hoses are exposed in the working area, only an electrical power connection is required.

These features make the SBL1100 one of a kind, and it is exceptionally priced to compete with any other gantry manufacturer and comparable model.



### Product Features

- Self-contained hydraulics and electrics
- Intellilift wireless control system
- Self-propelled tank rollers
- Foldable beam



### Technical Data:

#### Capacity per tower:

1st Stage:	293 ton (2670kN)
2nd Stage:	192 ton (1750kN)
3rd Stage:	110 ton (1000 kN)

#### Dimensions (LxWxH):

Transport:	4308 x1361 x 2244mm
Retracted:	3350 x1361 x4370mm
1 stage out:	3350 x1361 x7304mm
2 stage out:	3350 x1361 x10068mm
3 stage out:	3350 x1361 x12002mm

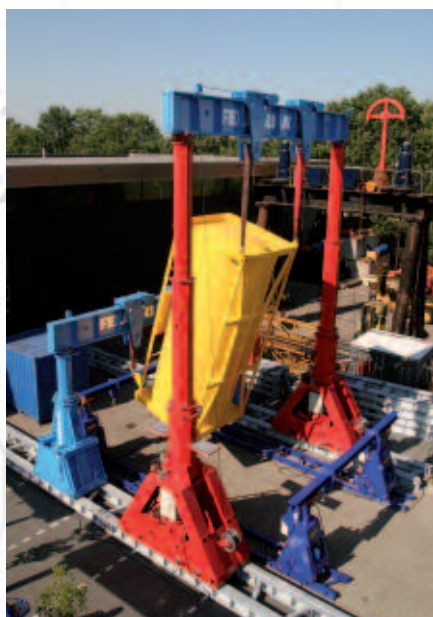
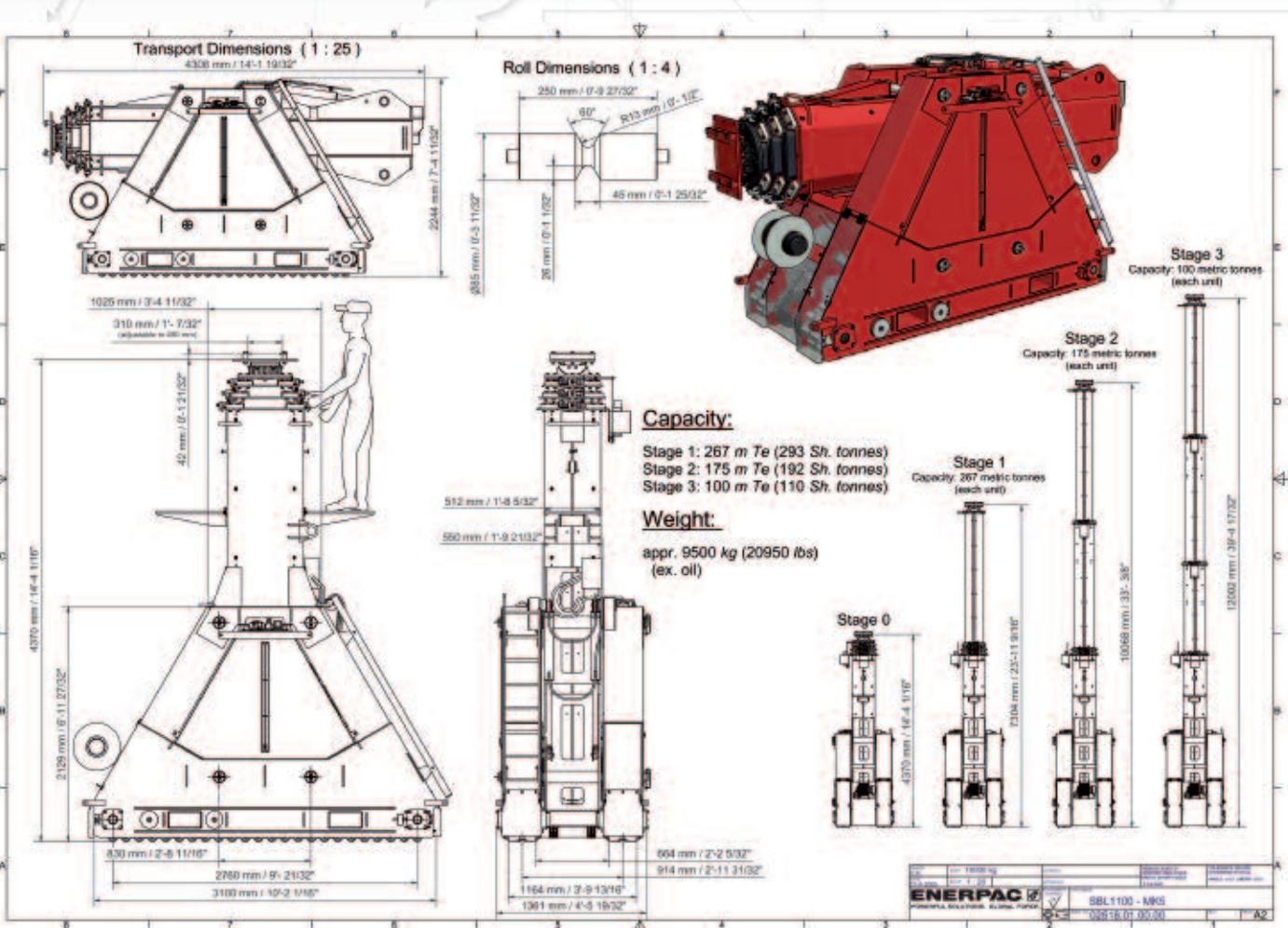
#### Operating speed:

Extension:	24 min
Lifting/Lowering:	26' (8m)/h - loaded
Traveling:	82' (25m)/h

#### General:

Weight:	9500 kg/unit (excluding oil)
Power source:	380/440 V 50/60 Hz 15A/unit

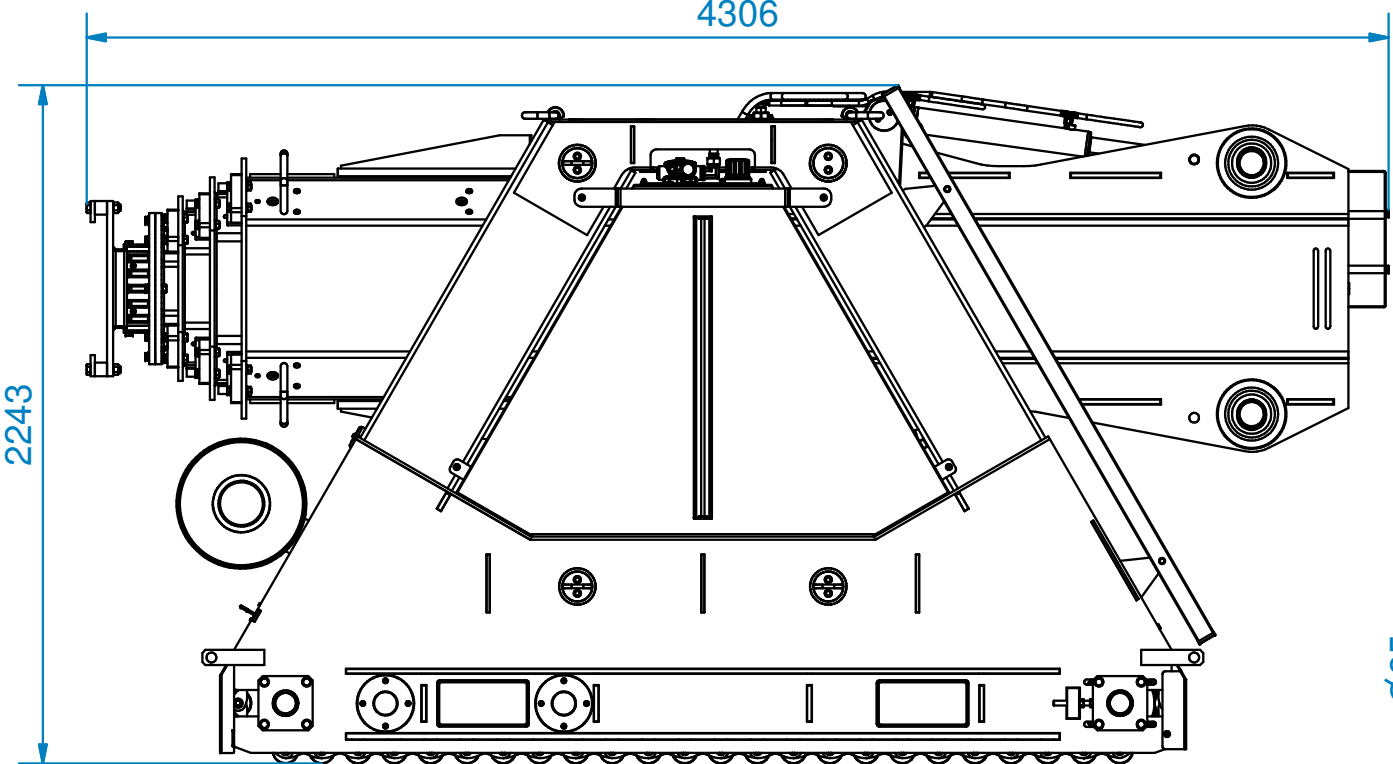
### Technical drawings



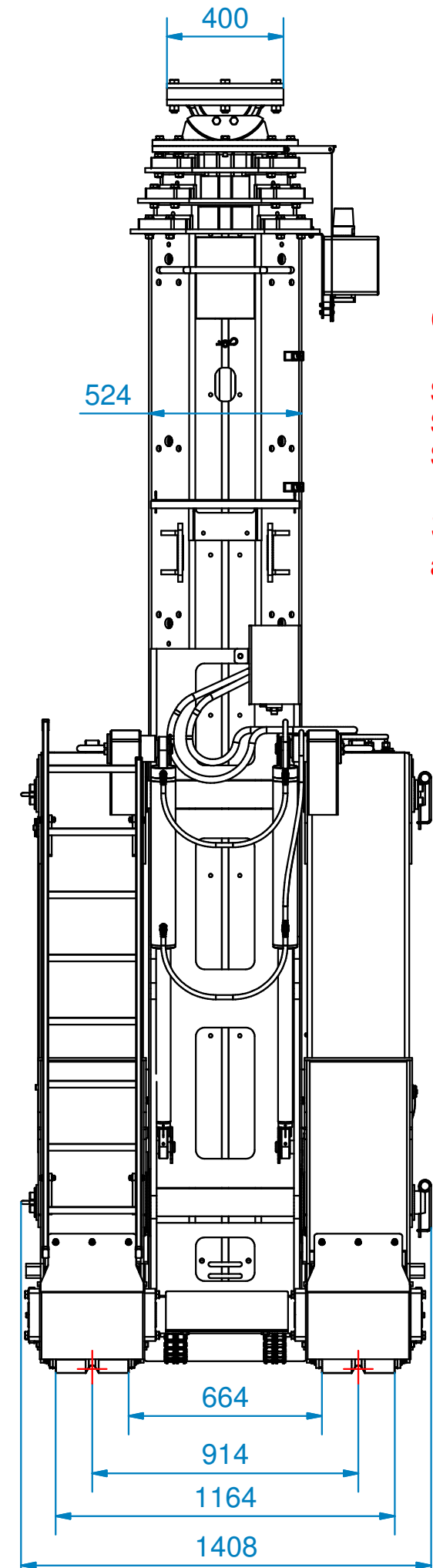
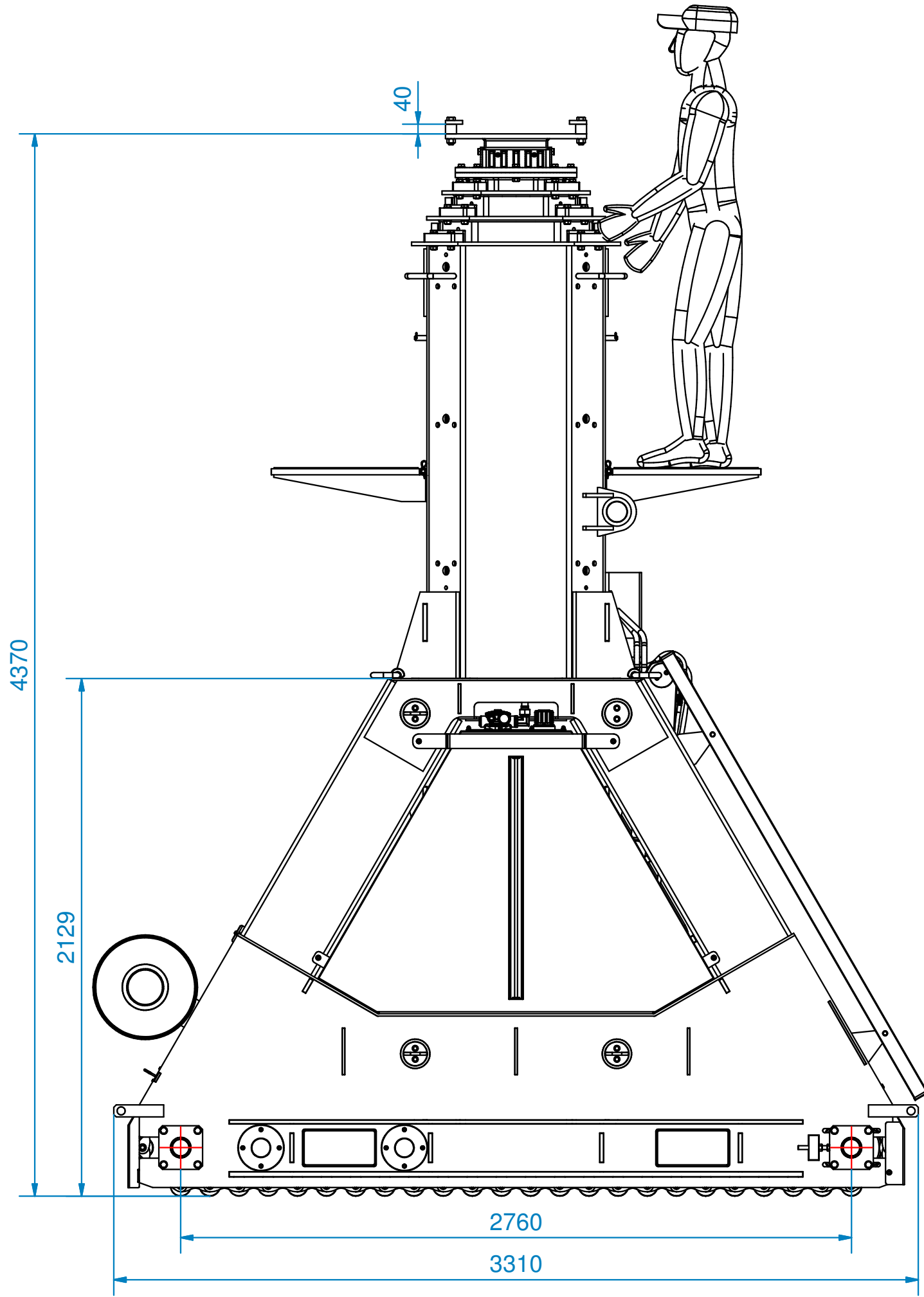
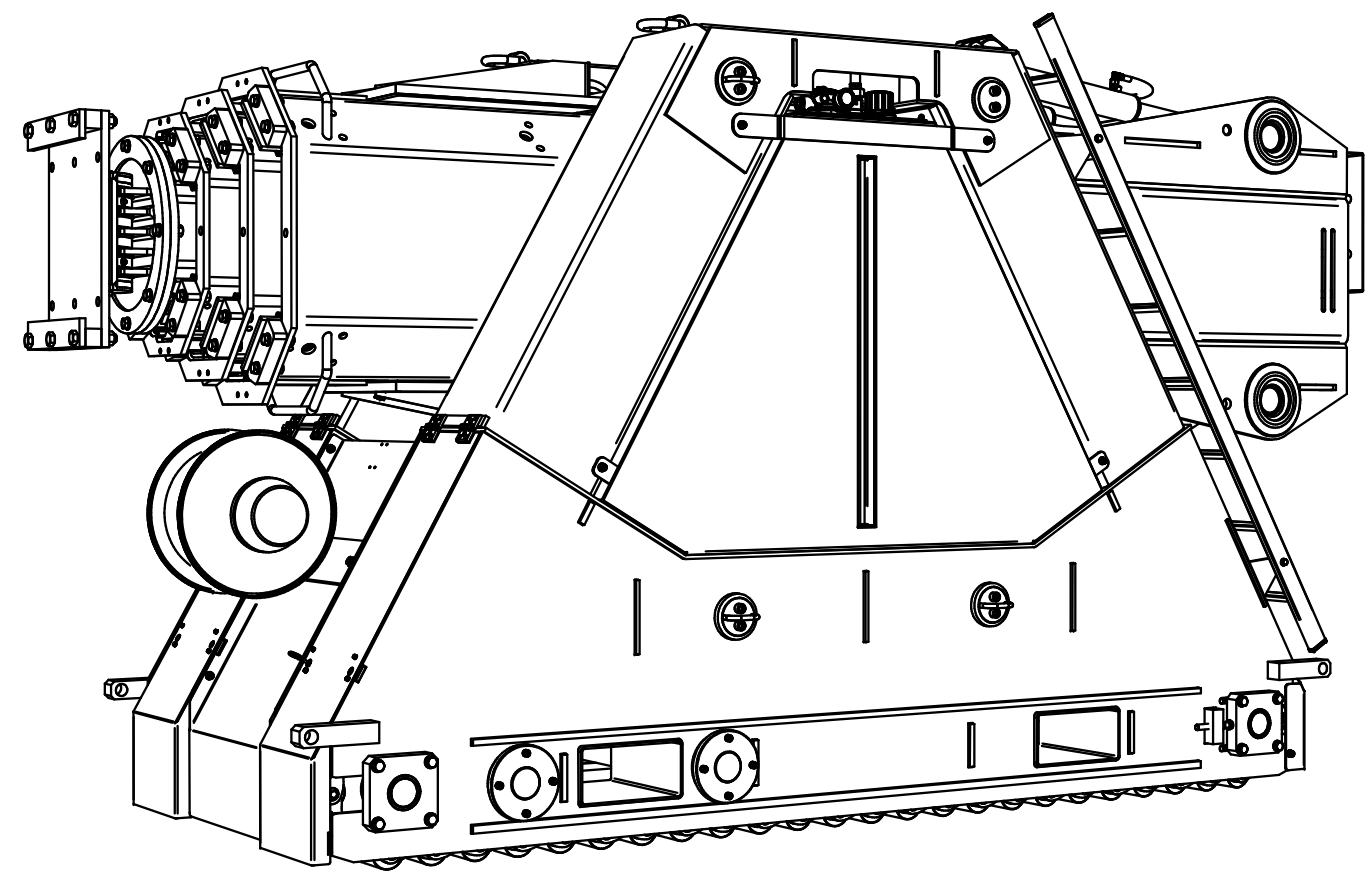
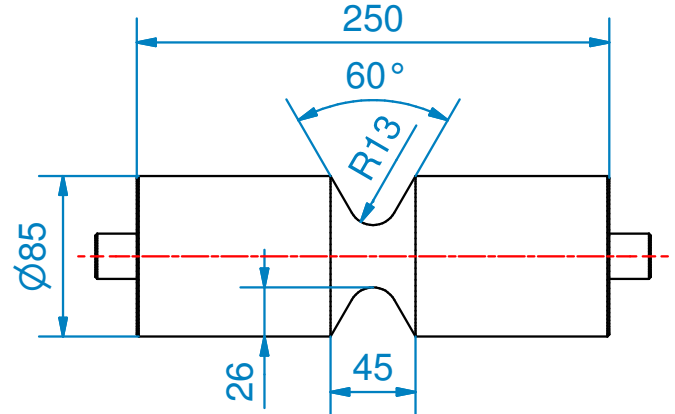
Disclaimer: We reserve the right to make design modifications without prior notice.



Transport Dimensions ( 1 : 25 )



Roll Dimensions ( 1 : 4 )

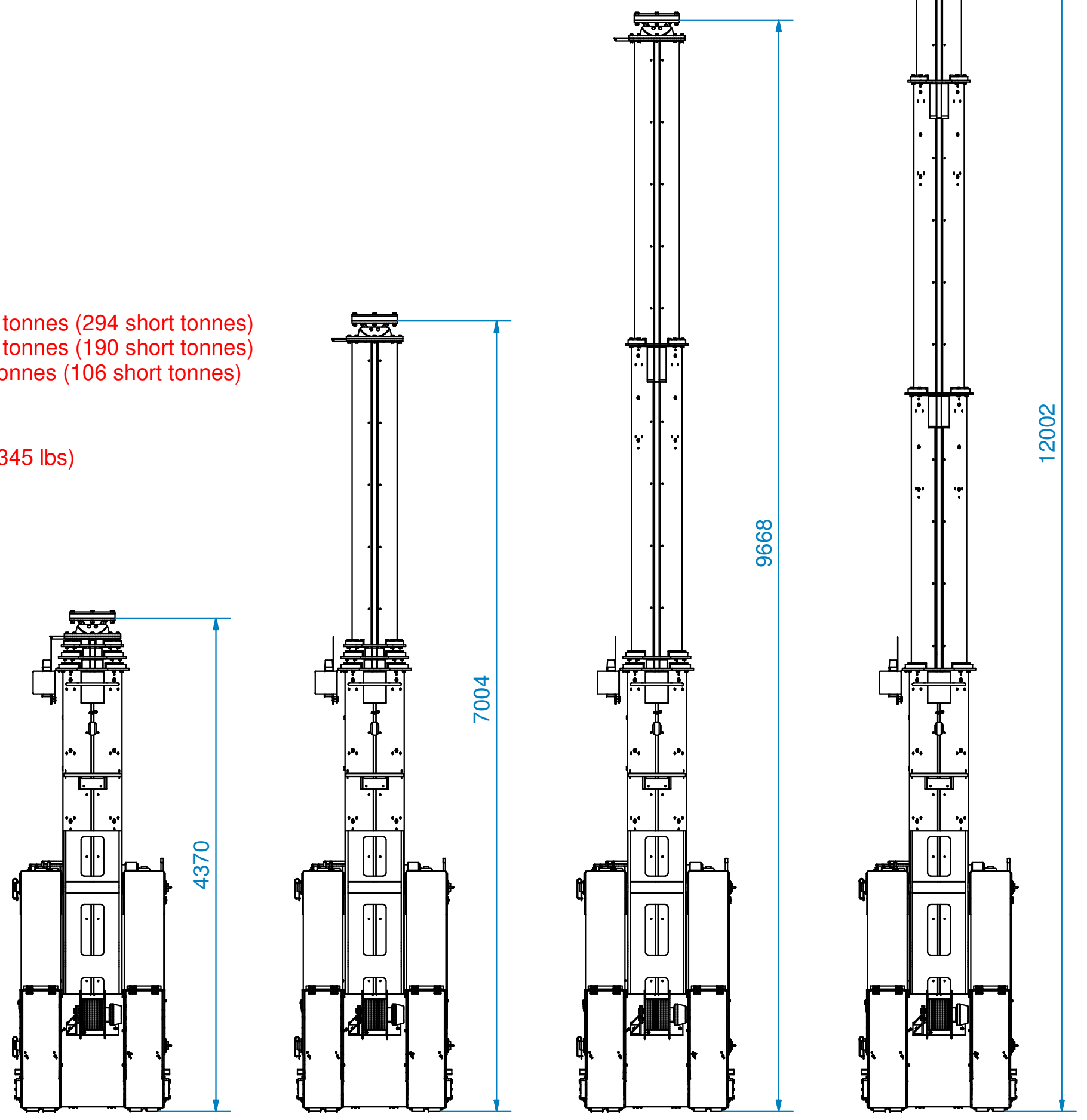


Capacity:

Stage1: 267 metric tonnes (294 short tonnes)  
Stage2: 172 metric tonnes (190 short tonnes)  
Stage3: 96 metric tonnes (106 short tonnes)

Self weight:

appr. 11950 kg (26345 lbs)



DRAWN BY: C.K.	APPROVED BY: [Signature]	MASS: 11950 kg	MATERIAL CERTIFICATE: [Signature]	DATE: 31-7-2011	REMOVE BURS OF INTERSECTING HOLES. BREAK SHARP EDGES. 0.1-0.3x45°	TOLERANCE UNLESS OTHERWISE STATED: ANGLE: ± 0.5° LINEAR: ± 0.5
CHECKED BY: [Signature]	SCALE: 1 : 20	MATERIAL: [Signature]	ROUGHNESS OVERALL: 3.2	PART NAME: SBL1100 - MK6	DRAW. NO: 02518.01.00.00	REV.: 0 FORM: A2
OPAAALSTRAAT 44, 7554 TS HENGELLO HOLLAND PO BOX 421, 7550 AK HENGELLO HOLLAND TELEPHONE (+31) 74-242045 FACSIMILE (+31) 74-2430338 ENERPAC [Logo] © COPYRIGHTS RESERVED						