

Features:

Capacity: 125 tonnes (metric)
 Operating pressure: 330 bar

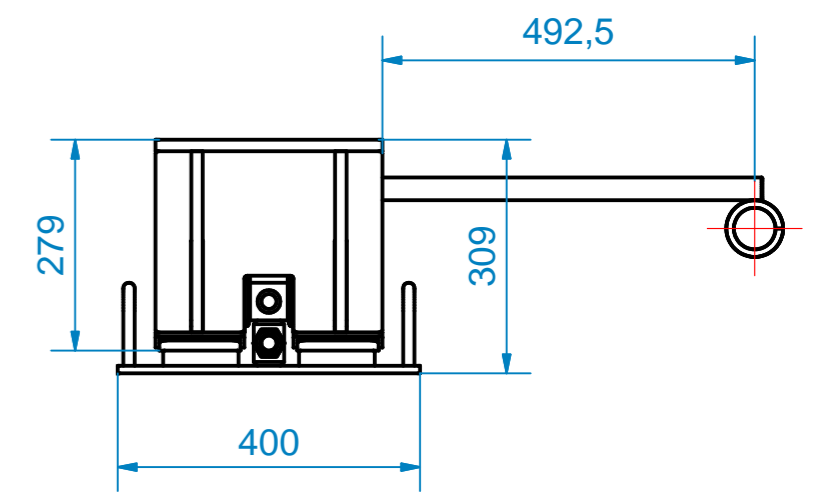
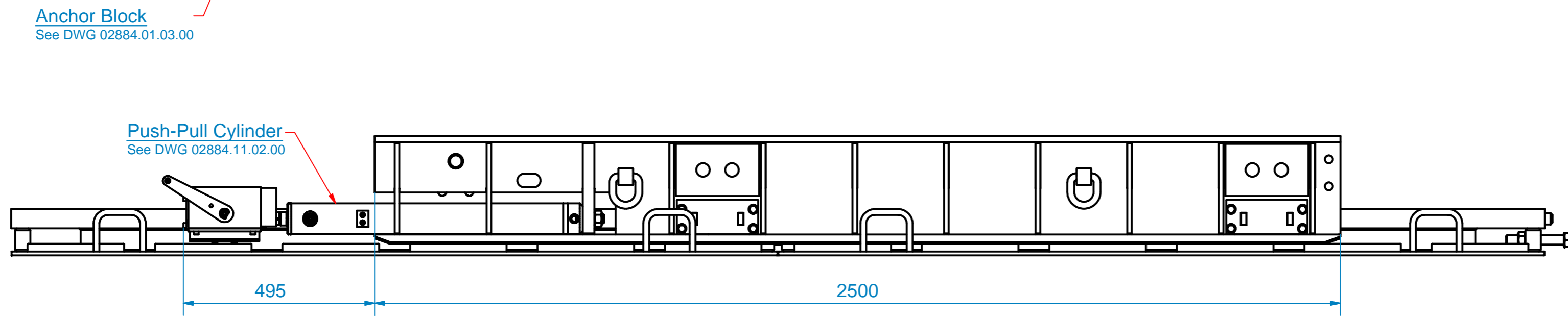
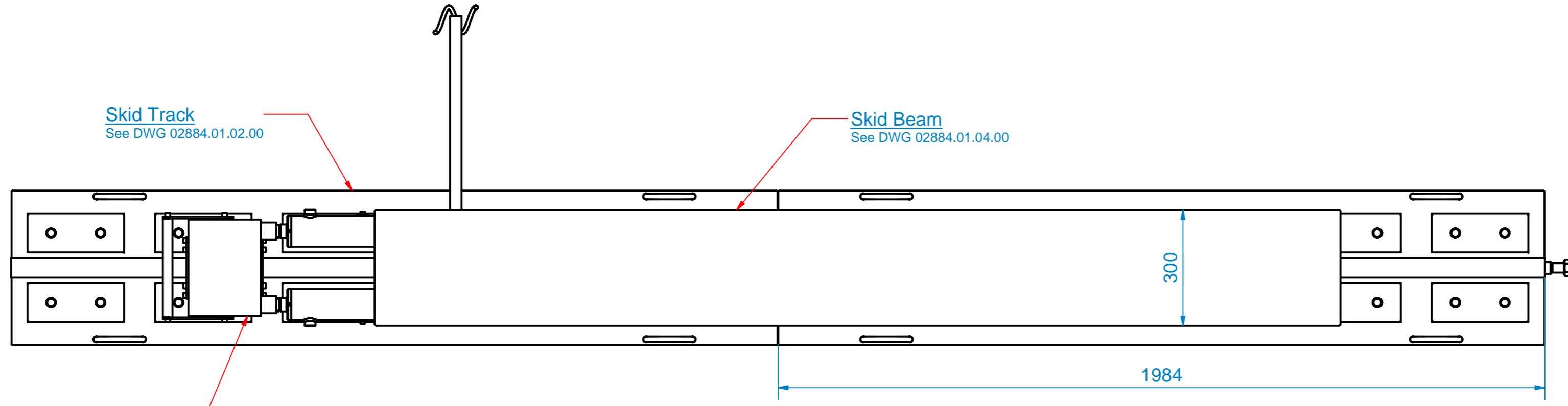
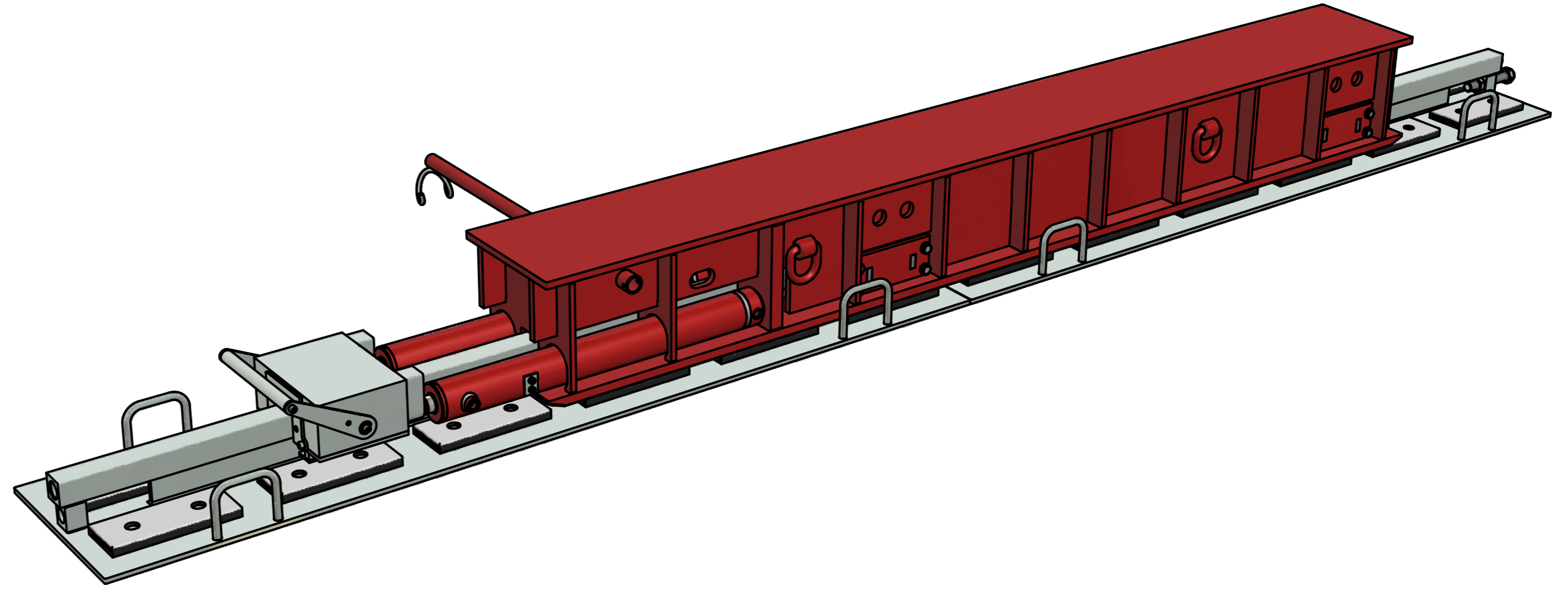
PP push capacity: 22 tonnes (metric)
 PP pull capacity: 16 tonnes (metric)
 PP stroke: 600 mm

Anchor Block capacity: 30 tonnes (hold function)

Bio-degradable grease can be used for lubrication
 Friction: appr. 8%

Total weight Skid Beam option appr. 500 kg (ex. tracks)

Total weight Skid Track: appr. 120 kg



DRAWN BY: C.K.	APPROVED BY:	MASS: 740 kg	MATERIAL CERTIFICATE:	DATE: 23-4-2008	REMOVE BURRS OF INTERSECTING HOLES. BREAK SHARP EDGES 0.1-0.3x45°	TOLERANCE UNLESS OTHERWISE STATED; ANGLE: ± 0.5° LINEAR: ± 0.5
CHECKED BY:	SCALE: 1 : 10	MATERIAL:	OPAPALSTRAAT 44, 7554 TS HENGELLO HOLLAND PO BOX 421, 7550 AK HENGELLO HOLLAND TELEPHONE (+31) 74-2422045 FACSIMILE (+31) 74-2430338 ENERPAC			
Dimensional tolerances according ISO 2768 Fit tolerances according ISO 286 Coating tolerances according ISO 9613 Cold deforming tolerances according DIN 9905 Dimension tolerances on welding according ISO 13920, class B Shape tolerances according ISO 13920, class E			ROUGHNESS OVERALL: 3.2	PART NAME: Skidding System 125 Te (Beam) DRAW NO: 02884.01.00.01		
				REV: A	FORM: A2	